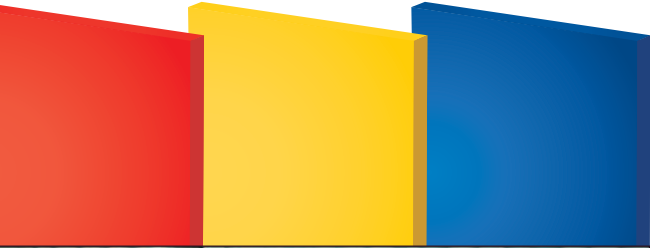




# PENTCO

## FINISH COATINGS

The Final Touch to a Masterpiece



Computer controlled paint application on Softouch Doors



Ice finish being applied to a Fullwrap door



Custom applications on Phase II Door



### LAMINATE [ICE FINISH]

FullWrap Laminate doors require no special coatings as they inherit the hardwearing finish in the material's composition, whether it be a suede, satin, or a textured surface. As an option, the laminate's surface can be finished with a high gloss that offers extreme pattern depth and color saturation.

### VENEER AND WOOD FINISHING

Staining brings colour and personality to the surfaces of FullWrap veneers, whether natural or engineered and Phase II Wood doors. After computerized sanding, doors can be stained with one of our signature colours or a custom colour at additional charge. Variations in colour can occur even with wood and veneers of the same species due to grain and fiber variations that affect stain penetration.

FullWrap Veneer and Phase II doors require finish coatings to seal in and protect their exteriors. A 12° low sheen or a 30° satin finish are standard offerings. Degrees indicate the amount of light reflection, a 90° gloss finish reflects virtually all light. To achieve a low sheen or high gloss finish, a specific, clear Polyurethane coating is applied to veneer doors to enhance color and grain definition.

### PAINTED DOOR FINISHING

Softouch doors are coated in standard 12°, 20° and 30° enamel finishes. These doors can achieve a high gloss finish by using high gloss enamels or Polyurethanes over a 12° base coat providing an exceptionally smooth and mirror like surface.

### UV COATINGS

Ultraviolet (UV) coatings contain no formaldehyde or solvents and are ideal for finishing flat doors, panels and components. They cure instantly under ultraviolet light and result in a durable and resilient finish. Doors finished in a UV coating are smooth to the touch and can be low to high in sheen.

\* Simulated door finishes - 12° (Red), 33° (Yellow), High Gloss (Blue) finish. *Please contact Pentco for swatch or door samples.*

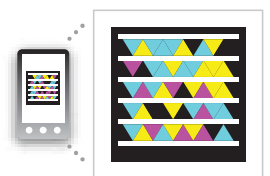


9274 194th St. Surrey, BC CANADA V4N4E9

PH: 604-888-5080 | FX: 604-882-0255

[www.pentco.com](http://www.pentco.com)

TOLL FREE: 1-800-663-7915



Free phone app  
<http://gettag.mobi>